

pco.edge

scientific CMOS camera

low noise

1.1 electrons

high resolution

5.5 megapixel



high speed

100 fps

high dynamic range

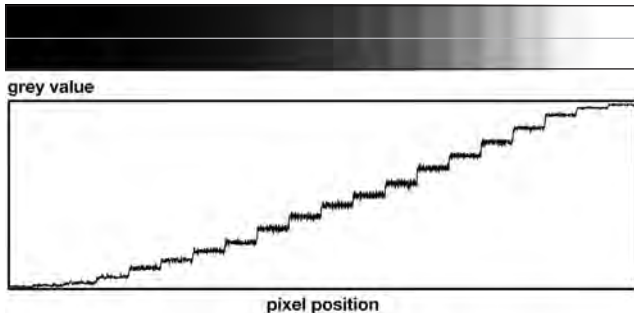
27 000:1

The new pco.edge is a breakthrough in scientific imaging cameras, due to its distinctive ability to simultaneously deliver extremely low noise, fast frame rates, wide dynamic range, high quantum efficiency, high resolution and a large field of view - all in one image.

pco.

1288 
EMVA Standard Compliant

features



The top image shows an extract of a typical pco.edge recording of a grey scale with a 1 : 10 000 dynamic in 20 steps. The bottom image is a plot of the grey values profile along the centered line through the top image (with gamma 2.2).

superior image quality

The new pco.edge camera (with scientific CMOS image sensor) features outstanding low read out noise of 1.1 electrons (e^-) med. Even at maximum speed of 100 frames/s at full resolution of 2560 x 2160 pixel the noise is less than 1.7 e^- med. Moreover the pco.edge provides an excellent homogeneous pixel response to light (PRNU, photo response non-uniformity) and an excellent homogeneous dark signal pixel behaviour (DSNU, dark signal non-uniformity), which is achieved by a sophisticated electronic circuit technology and firmware algorithms. The lower figure shows a comparison of a scientific grade CCD and the new pco.sCMOS image sensor under similar weak illumination conditions. This demonstrates the superiority of pco.sCMOS over CCD with regards to read out noise and dynamic, without any smear (the vertical lines in the CCD image).

flexibility and free of latency

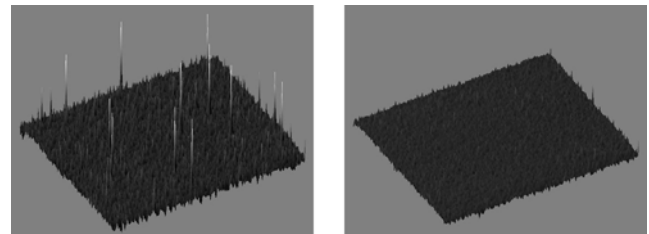
User selectable choice of rolling or global shutter mode for exposure provides flexibility for a wide range of applications. The advantages of rolling shutter are high frame rates and low read out noise whereas global shutter provides snapshot images for fast moving objects. Due to realtime transmission of the image data to the PC, there is no latency between recording and access or storage of the data.

free of drift

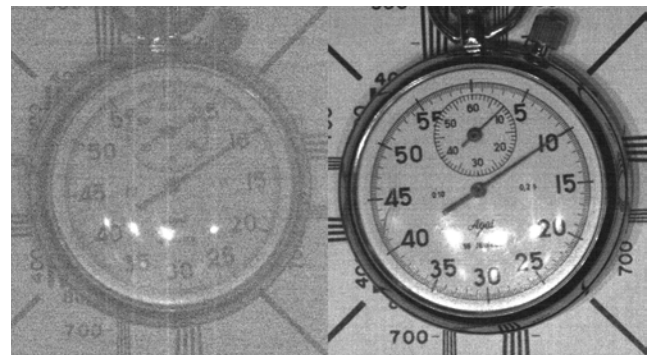
The new pco.edge camera features + 5 °C stabilized Peltier cooling, allowing for a continuous operation free of any drift phenomena in image sequences.

27 000:1 dynamic range

Due to the excellent low noise and the high fullwell capacity of the sCMOS image sensor an intra scene dynamic range of better than 27 000 : 1 is achieved. A unique architecture of dual column level amplifiers and dual 11 bit ADCs is designed to maximize dynamic range and to minimize read out noise simultaneously. Both ADC values are analyzed and merged into one high dynamic 16 bit value.



Dark image comparison with the measured distribution of "hot blinking" pixels at 5°C of the image sensor. The left image gives a 3D view with the sophisticated "blinker filter" algorithm off and the right image shows the result with the filter switched on.

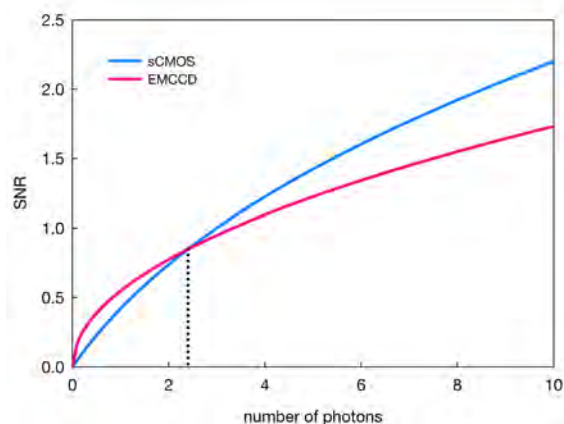


The left image was recorded by a scientific CCD camera while the right image was recorded by a pco.edge under identical conditions.

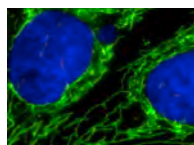
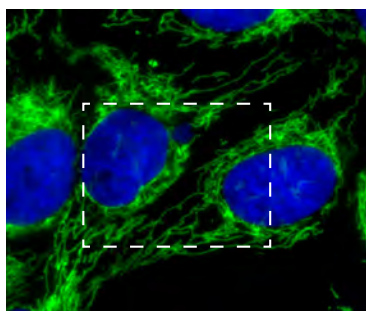
features

reaching emCCD domain

In the past emCCD image sensors featuring on-chip amplification were developed to detect the lowest level of light. However, amplification, while reducing read out noise, comes at the expense of dynamic range. Both features are not possible simultaneously in emCCD sensors. In addition, the amplification process generates excess noise, which reduces the effective quantum efficiency (QE_{eff}) of the emCCD sensor by the factor of two (e.g. the 90 % QE of a back illuminated emCCD sensor has an QE_{eff} of 45 %). The excess noise present in emCCDs makes the pco.sCMOS the sensor of choice at light conditions above 2 photons per pixel (@ 60 % QE, assuming a cooled sensor with dark current = 0). Furthermore, available emCCD sensors are limited in resolution and frame rate.



The graph shows the signal-to-noise (SNR) curves of a typical emCCD camera (gain = 1000) and a sCMOS camera vs. number of photons.



The two images show in comparison the field of view of a 5.5 Mpixel resolution vs. a 1.3 Mpixel resolution, courtesy of Dr. Stefan Jakobs, Dept. of NanoBiophotonics, MPI for Biophysical Chemistry

high resolution

A 5.5 Mpixel resolution in combination with a moderate chip size (21.8 mm diagonal, 6.5 μm pixel pitch) benefits microscopy applications with low magnification factor and large field of view, thereby reducing processing times and increasing throughput. The figure compares the potential of the new field of view of the pco.edge to the 1.3 Mpixel image resolution which is widely used in microscopy applications for scientific cameras.

high speed recording and data streaming

The new pco.edge offers in fast mode a frame rate of 100 frames/s (fps) at full resolution of 2560 x 2160 pixel as a full download stream to the PC. Therefore the recording time is just limited by either the amount of RAM in the PC or, in case of a RAID system, by the capacity and number of hard disks. As in many CMOS based cameras the frame rate increases significantly if smaller regions of interest (ROI) are used. The reduction of the image area works as well in favour of the frame rate of CCD sensors, but here unwanted regions still need to be read out at the expense of the total readout speed. The typical frame rate for a 1.3 Mpixel scientific CCD camera (6 e^- read out noise) is 10 fps. The new pco.edge camera provides at 1.3 Mpixel resolution (< 2 e^- read out noise) a frame rate of 210 fps in comparison.



Resolution 640 x 480 pixel @ 460 frames/s (color version)

technical data

image sensor

type of sensor	scientific CMOS (sCMOS)
image sensor	CIS2051
resolution (h x v)	2560 x 2160 pixel
pixel size (h x v)	6.5 μm x 6.5 μm
sensor format / diagonal	16.6 mm x 14.0 mm / 21.8 mm
shutter modes	rolling and global (snapshot)
MTF	76.9 lp/mm (theoretical)
fullwell capacity	30 000 e ⁻
readout noise ³	< 1.3 _{rms} / 1.1 _{med} e ⁻ @ (rs ¹ , ssc ²) < 2.0 _{rms} / 1.7 _{med} e ⁻ @ (rs ¹ , fsc ²) < 2.5 _{rms} / 2.3 _{med} e ⁻ @ (gs ¹ , ssc ²) < 2.4 _{rms} / 2.2 _{med} e ⁻ @ (gs ¹ , fsc ²)
dynamic range	27 000 : 1 (88.6 dB) (rs ¹ , ssc ²)
quantum efficiency	> 59 % @ peak
spectral range	370 nm .. 1100 nm
dark current ⁴	2 .. 6 e ⁻ /pixel/s (rs ¹) @ 5 °C 2 .. 6 e ⁻ /pixel/s + 0.6 / 1.8 e ⁻ /pixel (gs ¹) @ 5°C
DSNU	< 2 e ⁻ rms
PRNU	< 0.5 %
anti blooming factor	1 : 10 000

camera

frame rate	100 fps @ 2560 x 2160 pixel (rs ¹ , fsc ²) 50 fps @ 2560 x 2160 pixel (gs ¹ , fsc ²)
exposure / shutter time	500 μs .. 2 s (rs ¹) 10 μs .. 100 ms (gs ¹)
dynamic range A/D	16 bit ^{2,5}
A/D conversion factor	0.46 e ⁻ /count
pixel scan rate	95.3 MHz (ssc ²) / 286 MHz (fsc ²)
pixel data rate	190.7 Mpixel/s / 572 Mpixel/s
region of interest	horizontal: steps of 160 pixels vertical: steps of 2 pixels
non linearity	< 1 % (range of 5 .. 90 % signal)
cooled image sensor temperature	+ 5 °C (@ +10 °C .. + 30 °C, controlled)
cooling method	Peltier with forced air (fan) / water cooling
trigger input signals	frame trigger, sequence trigger
trigger output signals	exposure, busy
data interface	dual Camera Link (full, 10 taps)

¹ rs = rolling shutter / gs = global shutter

² ssc = slow scan mode - 16 bit / fsc = fast scan mode. Visually lossless compression / decompression for data transfer in fsc and horizontal resolution greater than 1920 pixel (due to Camera Link limitations).

³ The readout noise values are given as root mean square (rms) and median (med) values, due to the different noise models, which can be used for evaluation.

⁴ The dark current in global shutter mode consists of an exposure time related part and of a sensor readout time related part, which is constant for a given pixelclock 0.6 e⁻ @ 286 MHz / 1.8 e⁻ @ 95.3 MHz and frame size (here full frame). A smaller ROI reduces the latter part of the dark current accordingly.

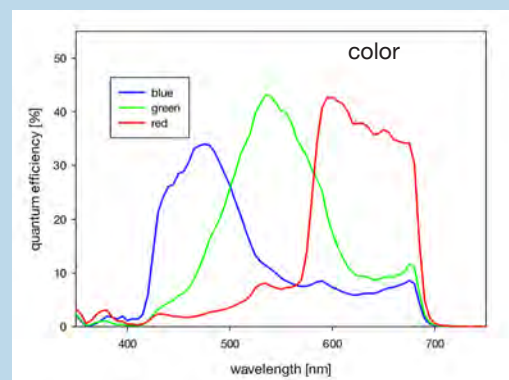
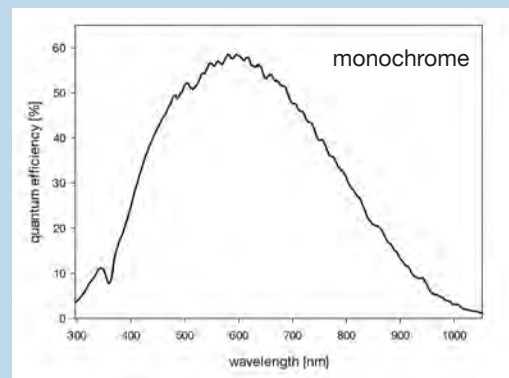
general

power supply	12 .. 24 VDC (+/- 10 %)
power consumption	20 W max. (typ. 10 W @ 20 °C)
weight	700 g
operating temperature	+ 10 °C .. + 40 °C
operating humidity range	10 % .. 80 % (non-condensing)
storage temperature range	- 10 °C .. + 60 °C
optical interface	F-mount & C-mount
CE / FCC certified	yes

frame rate table

typical examples	fast scan ²		slow scan ²	
	rolling sh.	global sh.	rolling sh.	global sh.
2560 x 2160	100 fps	50 fps	33.6 fps	16.8 fps
1920 x 1080	201 fps	100 fps	67 fps	33.3 fps
1600 x 1200	181 fps	90 fps	60 fps	30 fps
1280 x 1024	212 fps	105 fps	70 fps	35 fps
640 x 480	450 fps	222 fps	150 fps	74 fps
320 x 240	893 fps	435 fps	297 fps	145 fps

quantum efficiency



⁵ The high dynamic signal is simultaneously converted at high and low gain by two 11 bit A/D converters and the two 11 bit values are sophisticatedly merged into one 16 bit value.

technical data

software

Camware is provided for camera control, image acquisition and archiving of images in various file formats (WindowsXP and later). A free software development kit (SDK) including a dynamic link library, for user customization, integration on PC platforms is available. Drivers for popular third party software packages are also available.

(Please visit www.pco.de for more information)

options

monochrome & color versions available; custom made versions (e.g. water cooling, deep cooled...)



Water cooling unit Aquamatic II for use with pco.edge cameras.



MathWorks

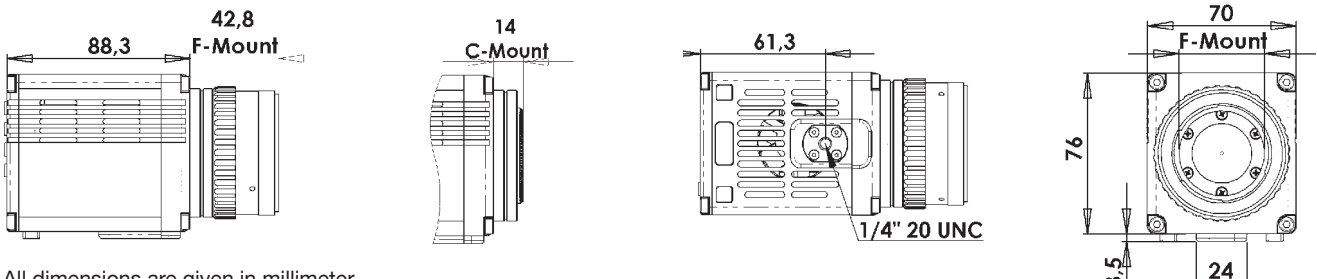


Molecular Devices



dimensions

F-mount and c-mount lens changeable adapter.



All dimensions are given in millimeter.

camera views

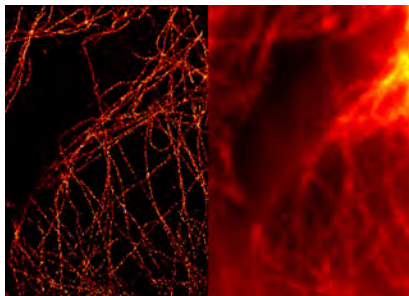


Further information can be found on www.pco.de & www.pco-scmos.com



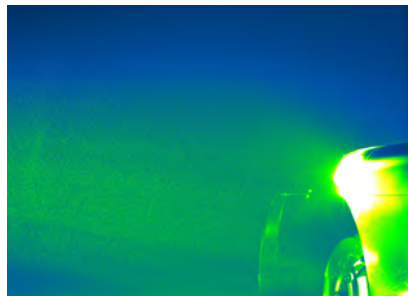
applications

life science



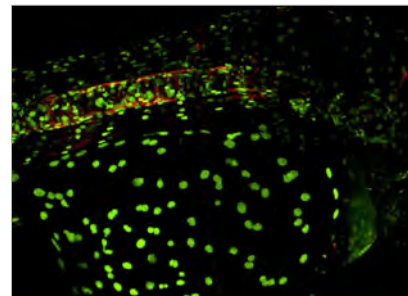
A widefield (right) and a GSDIM super-resolution (left) microscopy image of tubulin fibers obtained with a pco.edge, courtesy of Leica Microsystems, Germany

physical science



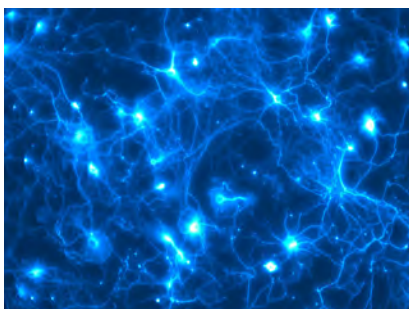
Seed particle PIV image of a wind tunnel experiment (false color rendering) to improve the aerodynamics of a racing car, courtesy of ILA GmbH & Toyota Motorsport, Germany

life science



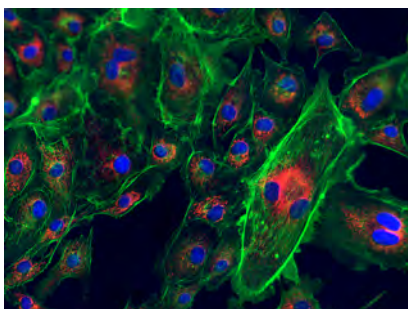
Zebrafish with two fluorescent labels, collected with a VisiScope Confocal based on the Yokogawa CSU-W1 wide head and a pco.edge camera, courtesy of Visitron Systems GmbH, Germany

life science



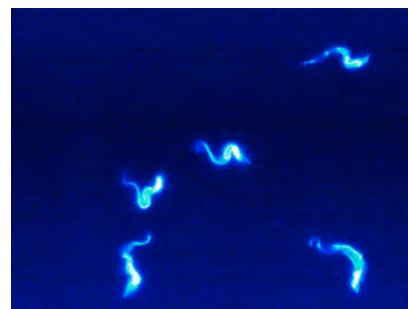
Neuronal network marked with a fluorophore (false color rendering) and recorded with a pco.edge.

life science



Extract of a fluorescent slide which was scanned by a pco.edge camera in a Panoramic 250 Flash scanner for digital pathology, courtesy of 3DHitech, Hungary

life science



An image of a sequence, which was recorded with a pco.edge at 400 frame/s. The maximum signal was about 100 photons, courtesy of Prof. Engstler, University of Würzburg, Germany

application areas

- Widefield microscopy ■ Fluorescent microscopy ■ Digital pathology ■ PALM ■ STORM ■ GSDIM
- dSTORM ■ Superresolution microscopy ■ Lightsheet microscopy ■ Selective plane imaging microscopy (SPIM) ■ Calcium imaging ■ FRET ■ FRAP ■ 3D structured illumination microscopy ■ High speed bright field ratio imaging ■ High throughput screening ■ High content screening ■ Biochip reading ■ Particle image velocimetry (PIV) ■ TIRF ■ TIRF microscopy / waveguides ■ Spinning disk confocal microscopy ■ Live cell microscopy ■ 3D metrology ■ TV / broadcasting ■ Ophthalmology ■ Electro physiology ■ Lucky astronomy ■ Photovoltaic inspection

europa

PCO AG
Donaupark 11
93309 Kelheim, Germany

fon +49 (0)9441 2005 50
fax +49 (0)9441 2005 20
info@pco.de
www.pco.de

america

PCO-TECH Inc.
6930 Metroplex Drive
Romulus, Michigan 48174, USA

tel (248) 276 8820
fax (248) 276 8825
info@pco-tech.com
www.pco-tech.com